

Disaster Management Cluster

Volume 1 Issue 4

15 November 2007

Key Links

Latest Situation Reports

http://www.cdmp.org.bd/Situation_report.html

Joint Typhoon Warning Centre

<https://metocph.nmci.navy.mil/jtwc.php>

Local Consultative Groups

<http://www.lcgbangladesh.org/>

Relief Web

<http://www.reliefweb.int>

Upcoming Events:

- Formulation Mission on earthquake mitigation in the CHT, 18-21 November
- Development Programme Meeting: Presentation on Disaster Management and Climate Change, 19 November
- GFDR Workshop, 27-29 November, Mumbai

Disaster Management Cluster



UNDP (Level 7), IDB Bhaban
Phone: (880-2) 811-8600
Fax: (880-2) 811-3196
E-mail: dmc.bd@undp.org

Disaster Watch



Bangladesh

Tropical Cyclone 'Sidr'

The severe cyclonic storm 'Sidr' is forecasted to cross the Khulna—Barisal coast in the next 24 hours.

Latest information, from the Disaster Management Information Centre, indicates that coastal districts are likely to experience heavy to very heavy rain, in addition to wind speeds of up to 220kph. Low lying coastal districts will likely be inundated by storm surge, as it is forecasted that the tide will rise 15-20 feet above average. The districts of Cox's Bazar, Chittagong, Noakhali, Feni, Laxmipur, Bhola, Barisal, Patuakhali, Borguna, Chandpur, Pirozpur, Jhalokhathi, Bagerhat, Khulna, Satikhira, and Jessore are on alert.

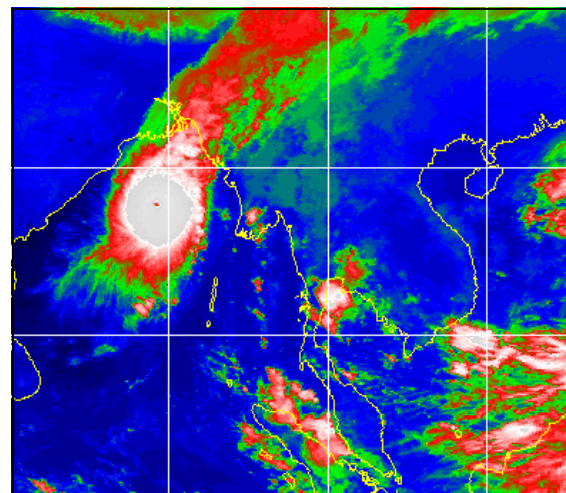
As a result of these conditions, flash flooding may occur, including in Dhaka, if sustained torrential rain develops.

In preparation, the Ministry of Food and Disaster Management (MoFDM) has started a public awareness campaign through the use of public announcement systems, maritime signals and flags have been upgraded and volunteers from the Cyclone Preparedness Programme (CPP) have been mobilised.

The Disaster Management Cluster's 'Comprehensive Disaster Management Programme' (CDMP) has activated its

emergency response action plan and is closely monitoring the national response planning. It is coordinating between the relevant Government agencies to identify any gaps.

UNDP's network of partners, including pre-qualified NGOs and CDMP partner NGOs, are in the coastal areas for close surveillance, assisting the CPP volunteers in evacuating vulnerable people to cyclone shelters. Coordination with local administrations is ongoing to ensure they have up to date information. UNDP's 'core group' for disaster management has also been activated.

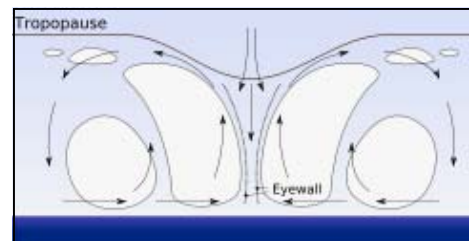
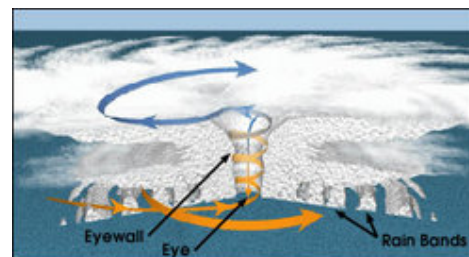


What is a Tropical Cyclone?

A tropical cyclone is an intense circular storm that originates over warm tropical oceans and is characterized by low atmospheric pressure, high winds, and heavy rain. Drawing energy from the sea surface and maintaining its strength as long as it remains over warm water, a tropical cyclone generates winds that exceed 119 km (74 miles) per hour. In extreme cases winds may exceed 240 km (150 miles) per hour, and gusts may surpass 320 km (200 miles) per hour.

Accompanying these strong winds are torrential rains and a devastating phenomenon known as the storm surge, an elevation of the sea surface that can reach 6 metres (20 feet) above normal levels.

Such a combination of high winds and water makes cyclones a serious hazard for coastal areas in tropical and subtropical areas of the world.



Disclaimer:

The views and opinions expressed in this newsletter do not necessarily represent the view and opinion of the UNDP Bangladesh.